

# FirstRe

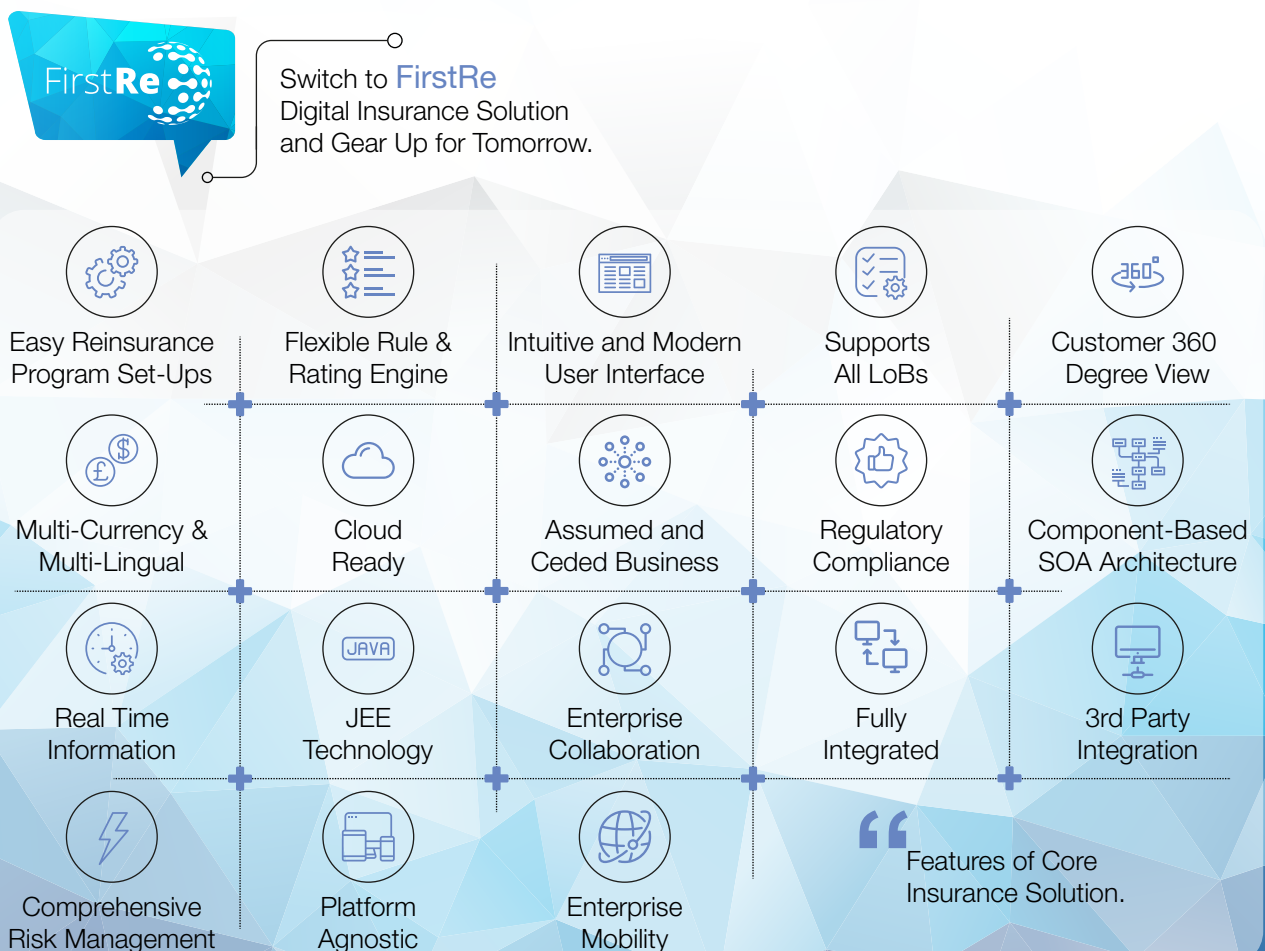
## Core Reinsurance Systems Suite

Reinsurers today face significant challenges of rapid business environment changes with the rise of natural and man-made disasters worldwide, and increased focus on compliance and financial controls. Lack of real-time global view of exposures in various businesses across nations represents a key issue for global players.

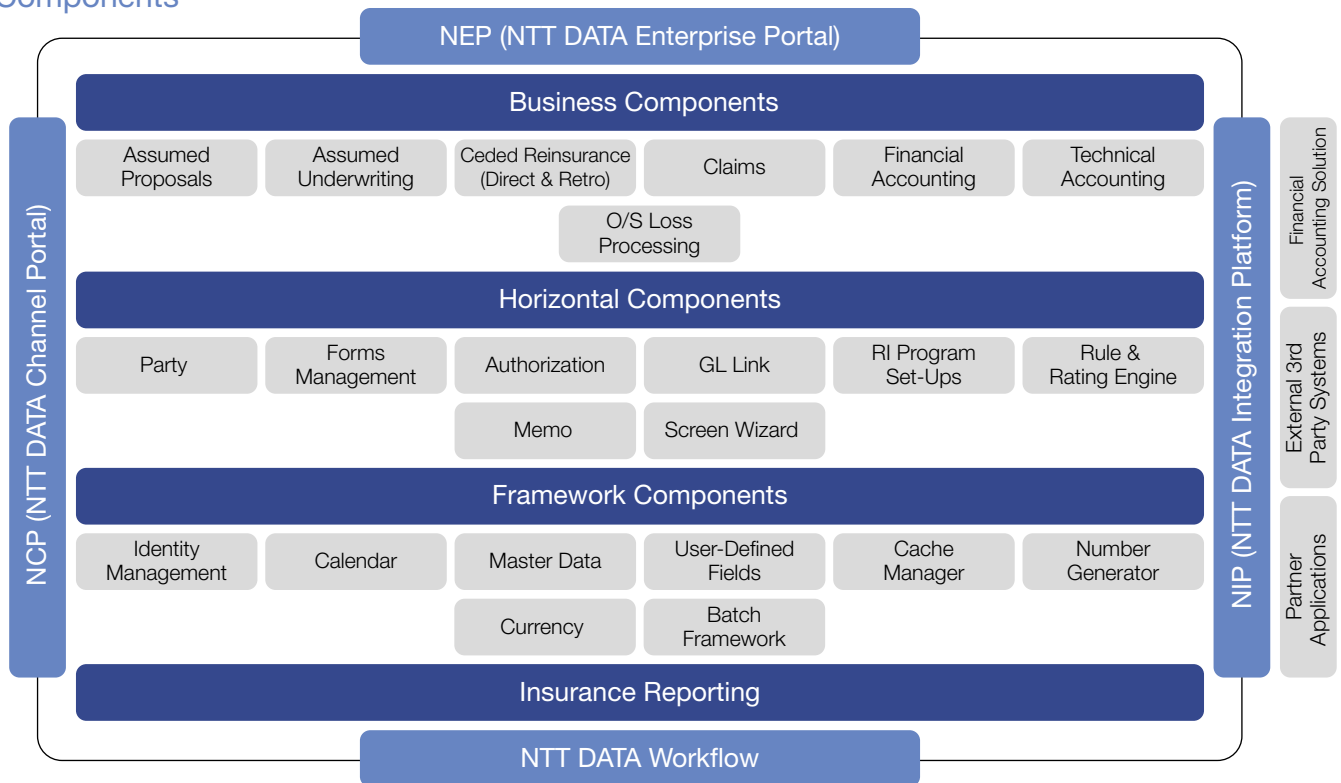
FirstRe addresses global and country-specific operational, processing and reporting needs. FirstRe is fully integrated software solution developed specifically for the Professional Reinsurance market, facilitates processing of both assumed and ceded reinsurance businesses. Operational and business process support for both Treaties (Proportional and Non-Proportional) and Facultative Contracts (Property, Marine, Casualty, Life, Accident, Disability, etc.) is catered for, as well as handling Direct and Retrocession businesses, providing cohesiveness between Reinsurance Underwriting, Claims, Retrocession, Risk Accumulation & Control and Accounting.

### FirstRe enables Insurers with

- Comprehensive Recoveries Control and Collection – automated and accurate calculation of ceded losses.
- Enhanced Reinsurance Program Management and Design - provides management with current financial, analytical and operational information to monitor program effectiveness and enhance the underwriting process and decision making.
- Fast and efficient implementation of new treaties and revisions – meeting industry standard data requirements for all treaty types and accounting methods with out-of-the-box user-defined rule and rate tables.
- Single system to support Assumed, Ceded and Retroceded Reinsurance.
- Tracking of all financials to Policy, Claim and detail attachment level.



## Components



## Agility for Insurers

### Technology

- **Built for the Future:** JEE SOA Design, Mobility & Cloud Ready, Intuitive & Modern UI, Platform Independent.
- **Fully Integrated:** Plug-and-Play Architecture, Easy Coupling & De-coupling, Straight-through Processing, 360 Degree View.

### Empowerment

- **Faster Time-to-Market:** Ready-to-use Packaged Solutions, Fast Configurations & Roll-outs.
- **Operational Efficiency:** Fully Integrated Solution for all LOBs with Real-time Data, Comprehensive Out-of-the-box Industry-standard Capabilities.
- **Customer Acquisition:** Customer-centric Solutions with Front-end Capabilities for Empowering Channels & Customers.

### About Us

NTT DATA is a leading IT services provider and global innovation partner with 119,500+ professionals based in over 50+ countries. NTT DATA emphasizes long-term commitment and combines global reach and local intimacy to provide premier professional services, including consulting, digital, managed services and industry solutions. We're part of NTT Group, one of the world's largest technology services companies, generating more than \$106 billion in annual revenues and partner to 80% of the Fortune 100.

### NTT DATA FA Insurance Systems Pte. Ltd.

10 Hoe Chiang Road, #16-01 Keppel Towers,  
Singapore 089315  
Telephone: +65 6879 4878  
www.nttdata-ndfs.com

Japan (Tokyo) | India (Bangalore) | Germany (Munich) | USA (New York)

### Commitment

- **One Stop Shop:** Products, Solutions, Tools, Services and Infrastructure.
- **Expertise:** 3 Decades of Insurance Domain Expertise, Over 200 Global Insurance Clients, Trusted Advisor to insurers around the World.

### Product

- **Global Solution:** Multi-geography, Region/country-layers, Model Offices.
- **Comprehensive Risk Management:** Risk Blocks, Reinsurance Programs, Enterprise level Risk Management.
- **Product Innovation:** Flexible Product Configurator, Intelligent Rule & Rating Engine.



**CMMI DEV/3**  
Exp. 2628-01-02 / Approval#30747



**CMMI SVC/3**  
Exp. 2628-01-03 / Approval#30747