

# FirstGen

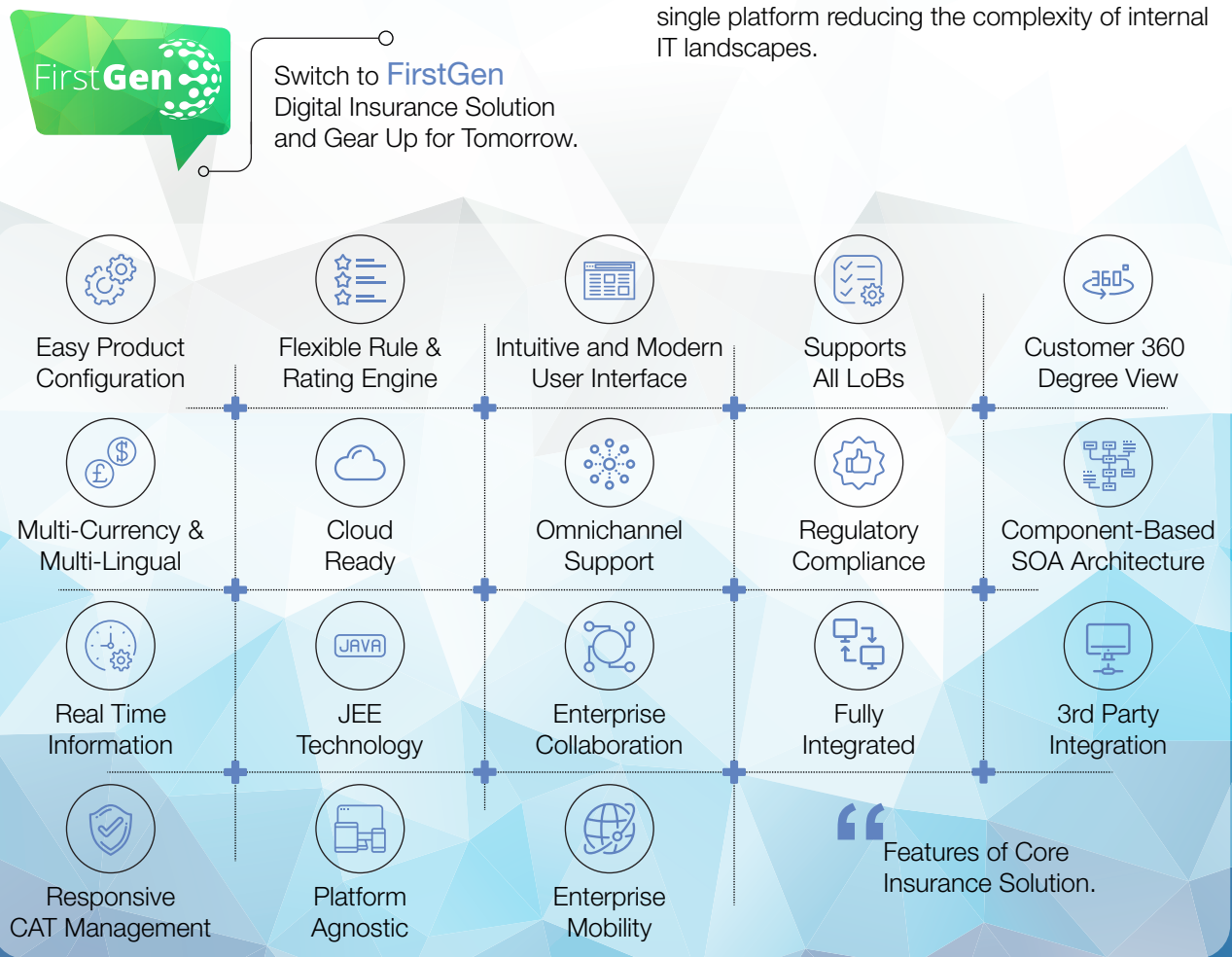
## Property & Casualty Core Insurance Systems Suite

As Property & Casualty (P&C) insurers launch innovative new products to address the rapidly changing consumer demands, speed-to-market has emerged as an important factor in remaining ahead of the competition. Catering to the various needs of multiple distribution channels and managing a diverse product range are other drivers of transformation of the core insurance functions in the P&C enterprise. Legacy core insurance applications have been largely monolithic, inflexible, and unable to adapt with the required agility and speed to constantly changing market dynamics.

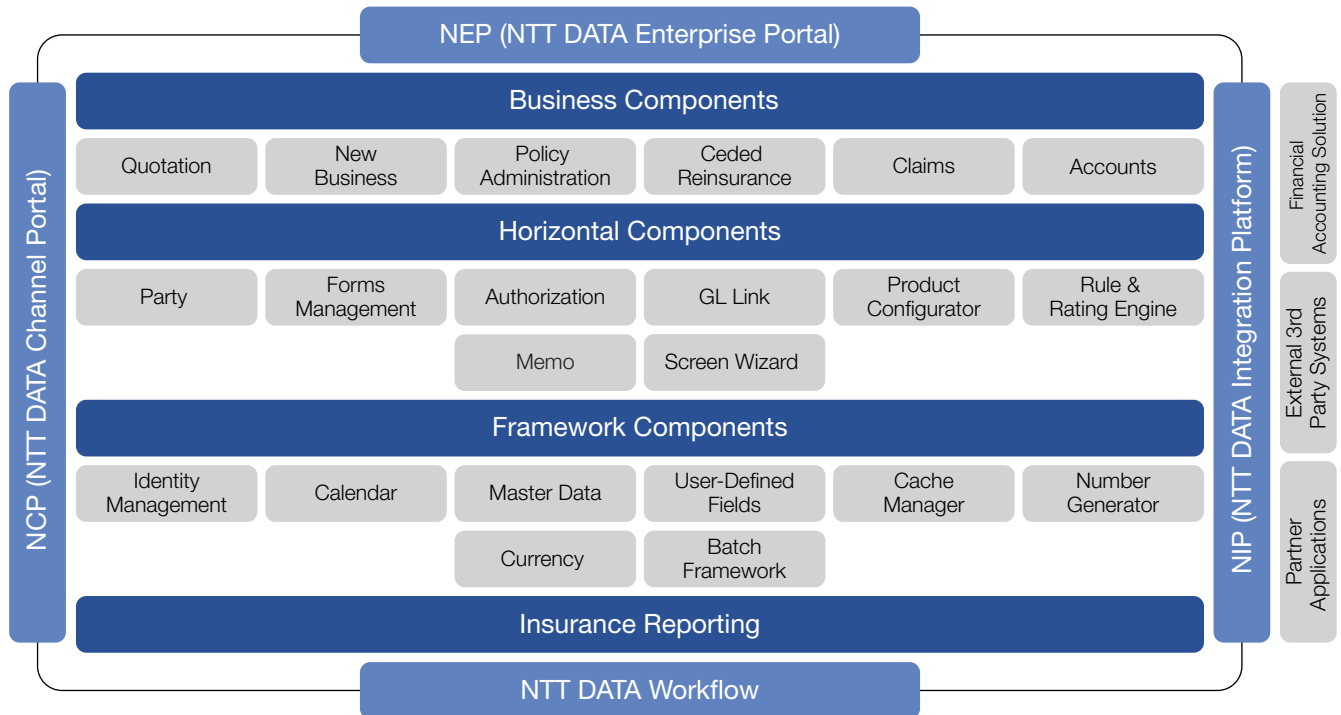
Built on Java JEE technology, FirstGen is a multi-line, web-based complete core solution for P&C insurers, which covers the full value chain of insurance operations. FirstGen is a future-ready application, providing superior user experience, adaptive screens for mobile device access, and broad configuration capabilities in areas of personalization and product definitions.

### FirstGen enables Insurers with

- 360 degree customer view and omnichannel capabilities, with complete multi-geography support.
- Comprehensive forms management configuration and integration capabilities for effective customer communication.
- Straight-through processing and real-time availability of data across new business, policy administration, claims, reinsurance and billing on an unified platform.
- Modular architecture that facilitates implementation of independent business components, like Policy Administration, Claims, Reinsurance, Rating, Billing or the entire P&C Core Insurance Suite with a rich set of industry-standard capabilities.
- Ability to underwrite all Lines of Businesses with a single platform reducing the complexity of internal IT landscapes.



## Components



## Agility for Insurers

### Technology

- **Built for the Future:** JEE SOA Design, Mobility & Cloud Ready, Intuitive & Modern UI, Platform Independent.
- **Fully Integrated:** Plug-and-Play Architecture, Easy Coupling & De-coupling, Straight-through Processing, 360 Degree View.

### Empowerment

- **Faster Time-to-Market:** Ready-to-use Packaged Solutions, Fast Configurations & Roll-outs.
- **Operational Efficiency:** Fully Integrated Solution for all LOBs with Real-time Data, Comprehensive Out-of-the-box Industry-standard Capabilities.
- **Customer Acquisition:** Customer-centric Solutions with Front-end Capabilities for Empowering Channels & Customers.

## About Us

NTT DATA is a leading IT services provider and global innovation partner with 123,000+ professionals based in over 50+ countries & regions. NTT DATA emphasizes long-term commitment and combines global reach and local intimacy to provide premier professional services, including consulting, digital, managed services and industry solutions. We're part of NTT Group, one of the world's largest technology services companies, generating more than \$107 billion in annual revenues and partner to 85% of the Fortune 100.

### NTT DATA FA Insurance Systems Pte. Ltd.

9 Raffles Place, #18-20/21 Republic Plaza  
Singapore 048619  
Telephone: +65 6879 4878  
www.nttdata-ndfs.com

Japan (Tokyo) | India (Bangalore) | Germany (Munich) | USA (New York)

### Commitment

- **One Stop Shop:** Products, Solutions, Tools, Services and Infrastructure.
- **Expertise:** 3 Decades of Insurance Domain Expertise, Over 200 Global Insurance Clients, Trusted Advisor to insurers around the World.

### Product

- **Global Solution:** Multi-geography, Region/country-layers, Model Offices.
- **Comprehensive Risk Management:** Risk Blocks, Reinsurance Programs, Enterprise level Risk Management.
- **Product Innovation:** Flexible Product Configurator, Intelligent Rule & Rating Engine.



**CMMIDEV/3**<sup>SM</sup>  
Exp. 2020-10-13 / Appraisal #30747



**CMMISVC/3**<sup>SM</sup>  
Exp. 2020-10-13 / Appraisal #30747